

SISTERS HISTORIC LANDMARKS



April 2021

LANDMARKS

* Denotes historic structure is no longer on-site.

- 1 **City Hall**
Sisters School*, 1912 - 1954
- 2 **Sisters Administration Building**
Sisters High School, 1937
- 3 **Homeland Realty**
Hardy Allen Home, 1908
- 4 **The Belfry**
Sisters First Church, 1914
- 5 **Maida Bailey Building**
Sisters Original Library, 1938
- 6 **Sinclair Station Market**
Gist Hotel*, 1910
- 7 **Sisters Saloon**
Sisters Hotel, 1912
- 8 **Dixie's**
Owl Tavern*, 1940
- 9 **110 W Cascade Ave**
Robert Smith's General Store*, 1895
- 10 **Sno Cap**
Sno Cap since 1954
- 11 **Sisters Motor Lodge**
Sisters Motor Lodge since 1948
- 12 **The Gallery Restaurant**
Pondosa-Ladd's-Ruth's Cafe, 1934
- 13 **Candy Corral**
Palace Hotel - Aitken Building, 1925
- 14 **141 E Cascade Ave**
Sorensen's Auto Court*, 1924
- 15 **Habitat for Humanity Thrift Store**
Leithauser Grocery (Third, 1950)
- 16 **Sisters Bakery**
Leithauser Grocery (Second, 1925)
- 17 **Sisters Veterinary Clinic**
Fire Lookout Tree*, 1915
- 18 **410 E Cascade Ave**
Wakefield Home, 1937

This publication has been funded with the assistance of a matching grant-in-aid from the Oregon State Historic Preservation Office and the Historic Preservation Fund, National Park Service, Department of the Interior. Any opinion, findings, and conclusions or recommendations expressed in this material do not necessarily reflect the views of the Department of the Interior. Regulations of the U.S. Department of the Interior strictly prohibit unlawful discrimination on the basis of race, color, national origin, age or handicap. Any person who believes he or she has been discriminated against in any program, activity, or facility operated by a recipient of Federal assistance should write to: Office of Equal Opportunity, National Park Service, 1201 Eye Street, NW (2740) Washington, DC 20005

The activity that is the subject of this brochure has been financed in part with Federal funds from the National Park Service, U.S. Department of the Interior. However, the contents and opinions do not necessarily reflect the views or policies of the Department of the Interior, nor does the mention of trade names or commercial products constitute endorsement or recommendation by the Department of the Interior.

THREE SISTERS HISTORICAL SOCIETY

WWW.THREESISTERSHISTORICALSOCIETY.ORG
 INSTAGRAM: @SISTERSMUSEUM
 FACEBOOK: @THREESISTERSHISTORICALSOCIETY
 EMAIL: THREESISTERSHISTORICALSOCIETY@GMAIL.COM

CITY OF SISTERS

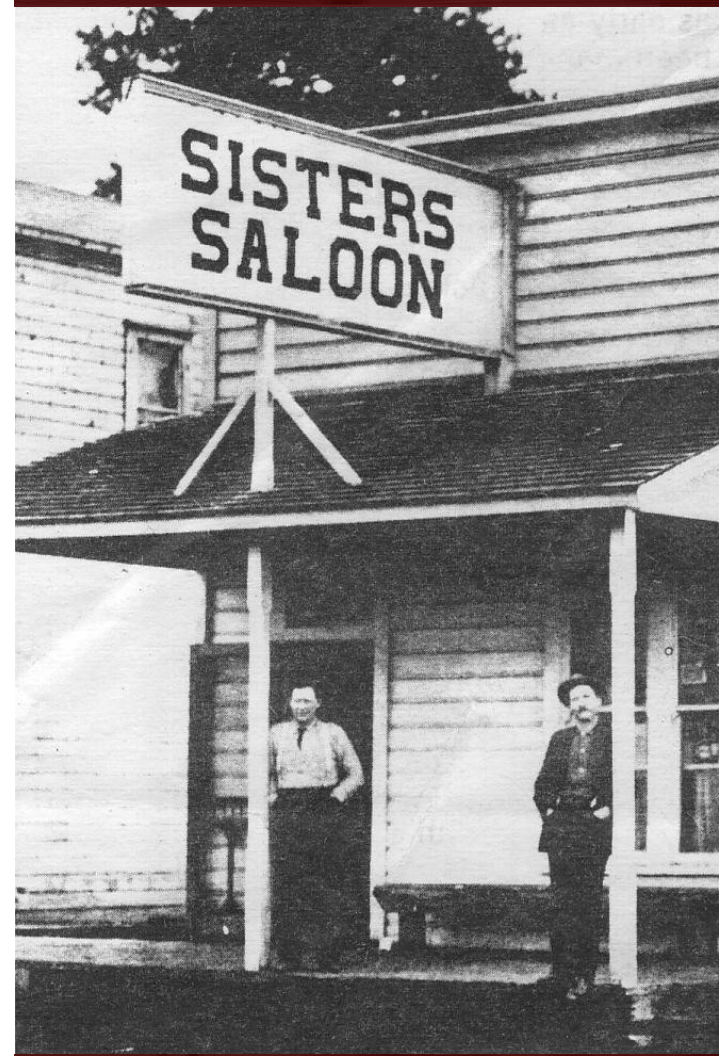
520 EAST CASCADE, SISTERS, OR 97759
 WWW.CI.SISTERS.OR.US
 PHONE: 541-549-6022
 FACEBOOK: @CITYOFSISTERSOREGON

SISTERS, OREGON TURNED 75!
 LEARN MORE ABOUT OUR HISTORY
 AND HOW WE ARE CELEBRATING BY
 SCANNING THE QR CODE WITH YOUR
 PHONE CAMERA.



SCAN ME

THREE SISTERS HISTORICAL SOCIETY



SISTERS HISTORIC LANDMARKS WALKING TOUR

EXPLORE THE HISTORY OF SISTERS' DOWNTOWN BY FOLLOWING THIS SELF-GUIDED TOUR AND THE HISTORIC PLAQUES ON BUILDINGS.



1 SISTERS SCHOOL, 1912 - 1954

520 E Cascade Ave

This grand two-story wooden school house was built right after the railroad had arrived in Bend and the region was thriving. The gymnasium behind it was added about 1928 and served as a community center and popular site for rodeo dances.



2 SISTERS HIGH SCHOOL, 1937

525 E Cascade Ave

Built during the Great Depression, this colonial revival style building was designed by John Isted, architect from Bend. In 1969, after the last mill closed in Sisters, the 65 students were transferred to Redmond High until 1992 when the new high school (now Sisters Middle School) was built. Placed on the National Register of Historic Places in 2006.

3 HARDY ALLEN HOME, 1908

401 E Main Ave

Built by Hardy and Daisy Allen. The etched glass scene for the door (now a replica) was shipped down from The Dalles. Hardy was a stockman on the Metolius River, owned the original wooden Sisters Hotel in 1902, a blacksmith shop, and later the Sisters Garage when automobiles started crossing the Cascades. Scheduled for demolition in the 1980's, it was instead moved to this location.

4 SISTERS FIRST CHURCH, 1914

302 E Main Ave

The first church in Sisters, though Presbyterian, was more of a non-denominational community effort. John and Myrtle Dennis donated the land, Perit Huntington hauled in the foundation rocks, Joe Duckett donated lumber and local loggers donated their time. The iconic Belfry tower provides an aerial view of town.

5 SISTERS LIBRARY, 1938

291 E Main Ave

The original Sisters Library was moved from Cascade Street to this location and renamed after Maida Bailey -- librarian at Reed College, then member for the Sisters, Deschutes County and the Oregon State Library Boards. The front room held children's books, and those under age required parental permission to enter the back room reserved for adults.

6 THE GIST HOTEL, 1910 - 1924

210 E Cascade Ave

The Gist Hotel stood on this corner spot until the fire of 1924 destroyed it. The fire started while Hattie Gist was back in her garden picking strawberries for the guest's supper. The fire was probably caused by a faulty flue.



7 SISTERS HOTEL, 1912

190 E Cascade Ave

This building survived the two major fires of 1923 and 1924 by citizens hanging dampened blankets out of the windows to protect it and remains the most iconic building in Sisters. Built by John and Myrtle Dennis. The hotel housed Fred Ruble's pharmacy and soda fountain; the bar came later.

8 OWL TAVERN, 1940 - 1970

100 E Cascade Ave

The Owl Tavern was a favorite watering hole in old Sisters. Pranks, confiscation of the brand new slot machine, gunshots, horses and even a camel was ridden through the doors of that storied old building. There were boarding rooms upstairs, and a back lot where the Warm Springs tribal members could set up camp during Rodeo.

9 ROBERT SMITH GENERAL STORE 1895 - 1937

110 W Cascade Ave

The Robert Smith General Store was a substantial building owned by brothers Alex and Robert Smith, who also platted the town in 1901. Robert was postmaster from 1903 to 1912. The second floor of the building was used for dances and Odd Fellows Lodge meetings. The store catered to sheep men who purchased supplies during the summer range. Torn down in 1937 for the modern Bush's Market, there has always been a grocery store on this site.



10 SNO CAP, 1954

380 W Cascade Ave

The Sno Cap has served their iconic shakes and hamburgers since 1954 in this original building. The drive up window has served horseback riders and in the old days the cows would be driven by on their way to summer range.

11 SISTERS MOTOR LODGE, 1948

511 W Cascade Ave

The Sisters Motor Lodge was built when it was popular to have a garage adjacent to each motel room. The brilliant, large neon sign beckoned travelers from the McKenzie Highway.

12 PONDOSA - LADD'S - RUTH'S CAFÉ 1934

171 W Cascade Ave

The original Pondosa Café became Ladd's Café in 1945. Owner Arthur Ladd was on the city council. After his death, new owner Neil Winkle moved, enlarged and named it Ruth's Café and added the Wink Room bar. In the 70's, as The Gallery Restaurant, Ray Eyerly held court on his barstool with his numerous paintings adorning the walls.



13 PALACE HOTEL, 1954

101 E Cascade Ave

Built by George and Grace Aitken, this building was known best for its grand back bar and soda fountain. The ice cream was homemade with ice cut from the river or ponds and stored in one of the adjacent structures. Grace was particular about which cows produced the best cream and used fresh berries in her ice cream.

14 SORENSEN'S AUTO COURT, 1924 - 1966

141 E Cascade Ave

The Sorensen's Auto Court was the first service station in Sisters, built when more automobiles were coming through. Chris Sorensen kept adding motel units with attached carports in a U-shape around the gas station until he had 15 total. By 1937, he added his family home to these two lots in the center of town. From 1940-1966, Mrs. Sorensen continued to operate the business.



15 LEITHAUSER GROCERY, 1950

211 E Cascade Ave

Here the Leithauser family expanded their grocery business as the town grew and added a variety store and barbershop to their modern supermarket in 1950. Hours were long particularly during hunting season, when local shops, cafes and gas stations took turns staying open 24 hours.



16 LEITHAUSER GENERAL STORE, 1925

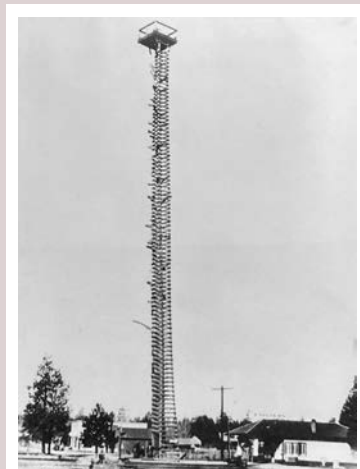
251 E Cascade Ave

This general store was built after the original store (built in 1911) was burned down in the 1924 fire. It served Sisters until 1950 when the new large supermarket was built two lots west. Since then, it has been used as a barber shop, yarn mill, variety store and bakery.

17 FIRE LOOKOUT TREE, 1915 - 1926

371 E Cascade Ave

The Lookout Tree was a 110-foot pine tree with a platform on top pierced with iron rungs made by Hardy Allen's blacksmith shop. A State Forester climbed to the top each morning to scan the area. Despite the lookout, Sisters had two major fires in 1923 and 1924, destroying much of Cascade Street due to a lack of fire equipment.



18 WAKEFIELD BUNGALOW, 1937

410 E Cascade Ave

Built by George and Virginia Wakefield, this home features a full basement lined with lava-rock. As owner of Wakefield's Garage, George kept his many vehicles in the carriage house behind it. He started Sisters Airport in 1936, served as Mayor and also President of the Sisters Rodeo Association for a time.